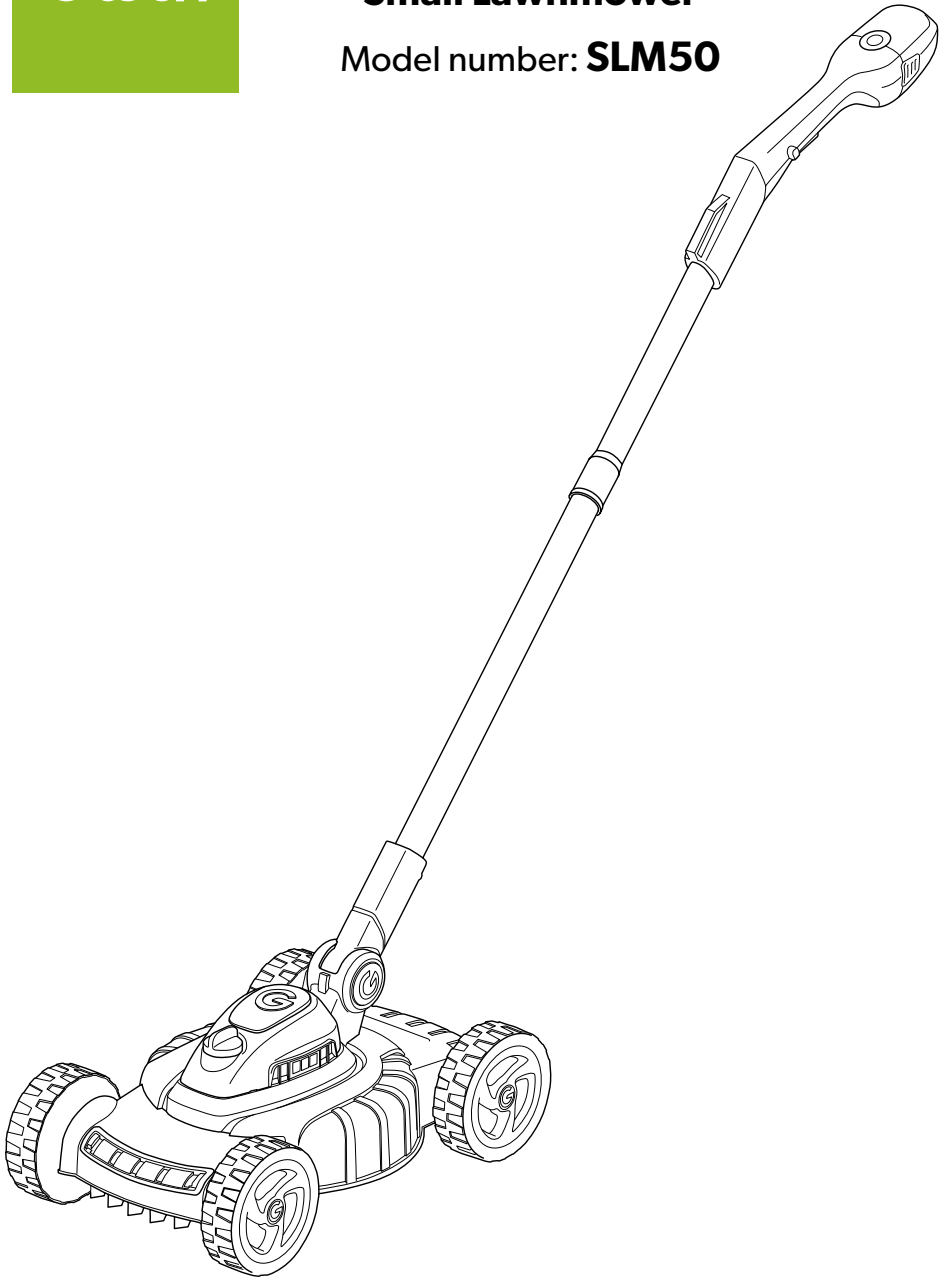


Gtech

Small Lawnmower

Model number: **SLM50**



OPERATING MANUAL
Original Instructions

IMPORTANT SAFEGUARDS:



**IMPORTANT: READ ALL INSTRUCTIONS BEFORE USE.
RETAIN INSTRUCTIONS FOR FUTURE REFERENCE.**



Do not use in rain or leave outdoors whilst raining.



WARNING: Basic safety precautions should always be observed when using an electrical appliance to reduce the risk of fire, electrical shock or serious injury.

Personal Safety:

- Only use the mower on grass and lawns, as described in this manual.
- Keep out of reach of children and animals at all times.
- Only use in daylight or good artificial light.
- Do not use while there are other people, especially children, nearby.
- Stay alert, watch what you are doing and use common sense when operating the mower.
- Do not use the mower while you are tired or under the influence of drugs, alcohol or medication. This may result in serious personal injury.
- Always be aware of your surroundings and stay alert for possible hazards.
- Use protective personal equipment such as safety glasses, non-skid safety shoes, sturdy gloves to reduce the risk of personal injury.
- Do not operate when barefoot or wearing open toed shoes.
- Dress appropriately. Do not wear loose clothing or jewellery and keep hair, clothing and gloves away from moving parts.
- Always be sure of your footing on slopes or in slippery conditions.
- Do not use on excessively steep slopes.
- Take particular care when reversing with the mower or pulling it towards you.
- Never touch the rotating blade.
- Never operate the mower over gravel, as this risks flicking stones.
- Check the area where the mower is to be used and remove any objects that could jam or be thrown by the mower, such as stones and sticks.
- Avoid operating the mower on wet grass.
- Never operate the mower with damaged guards or without the guards in place.
- Visually check the cutting tools and their fasteners for any damage before each use.
- To prevent imbalance, any damaged or worn-out parts should be replaced.
- When operating the mower ensure that your hand is correctly positioned on the handle.
- Only start the mower when your feet are a safe distance from the cutting blade.
- Do not tilt the mower when starting the motor.
- Do not operate the mower if it is incomplete or has unauthorised modifications.
- Keep all body parts, especially hands and feet, away from the blade at all times.
- Warning, the blade will continue to move after the motor is switched off.

- Ensure that the blade has fully stopped and safety key has been removed before:
 - leaving the mower
 - clearing a blockage
 - adjusting the cutting height
 - lifting or carrying the mower
 - tilting the mower to move
 - checking or cleaning the mower
 - carrying out any maintenance
- If the mower vibrates intensively, stop the motor fully and identify the cause.
- The operator is responsible for accidents or hazards occurring to other people at their property.
- This appliance is not intended for use by persons (including children) with reduced physical, sensory or mental capabilities or lack of experience or knowledge.
- Never modify the mower in any way.

Electrical safety:

- Do not operate the mower in explosive atmospheres, such as in the presence of flammable liquids, gases or dust. Mowers create sparks, which may ignite the dust and fumes.
- Do not use the mower when a thunderstorm is approaching.
- Avoid body contact with earthed or grounded surfaces, such as pipes. There is an increased risk of electric shock if your body is earthed or grounded.
- Do not expose the mower to rain or wet conditions.
- Do not handle the charger or the mower with wet hands.
- Before charging check the power supply and charger cables for signs of damage or ageing.
- Do not expose the mower to temperatures exceeding 80°C, or leave the mower in direct sunlight or in the hot boot of a car for prolonged periods.

Battery safety:

- Do not attempt to use the charger with any other product or to charge this product with any other charger.
- Do not use the charger in moist or wet conditions or outdoors.
- Disconnect the cable connectors by pulling the plug only, never the charger.
- Do not use a damaged charger.
- Never cover the ventilation slots.
- Never open the charger. In case of defect, contact Gtech.
- This product contains Li-Ion batteries. Do not incinerate batteries or expose to high temperatures, as they may explode.
- Do not charge the battery when the surrounding air temperature or the battery pack is below 0°C or above 40°C.
- After heavy use or in high temperatures the battery may become warm. Allow the product to cool for 30 minutes before charging.
- Use only with the battery pack supplied.
- Leaks from battery cells can occur under extreme conditions. If the liquid gets on your skin wash immediately with soap and water. If the liquid gets into your eyes, flush them immediately with cold water for a minimum of 10 minutes and seek urgent medical attention.
- Protect the battery against excessive temperatures and fire.
- Do not store the battery outside for prolonged periods of time over the winter months.
- Do not dispose of the battery pack into household waste, fire or water. The battery pack should be collected, recycled or disposed of in an environmentally friendly manner. Discharge your battery pack by operating your Lawn Mower.

Remove the battery pack from the housing and cover the battery pack connections with heavy duty ventilation tape to prevent a short circuit and energy discharge. Do not attempt to open or remove any of the components.

- Remove the battery and charger from the mains when fully charged.
- Unplug the charger from the mains and battery when fully charged.






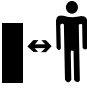




Service:

- Do not use the mower if the switch does not turn on or off. Any power tool that cannot be controlled by the switch is dangerous and must be removed or replaced.
- Before any servicing and cleaning take out the safety key and remove the battery.
- Check all visible fixing screws and nuts, especially on the cutter bar, to ensure they are tightened properly.
- Do not keep the mower in a damp room.
- Before using the the mower and after any impact, check for signs of wear and damage and repair or replace as necessary.
- Use only genuine replacement parts. This will ensure that the safety of the the mower is maintained.
- Do not attempt to repair any damaged parts on the mower unless you are qualified to do so.
- Please contact Gtech on 01905 345891 if you have any queries about your product.

Intended Use:

- This product is intended for DOMESTIC USE ONLY.

Warning Label Descriptions

	<p>Warning/ Caution.</p>		<p>Remove safety key before servicing and cleaning.</p>
	<p>Beware of severing toes or hands. Do not put hands or feet near a rotating blade.</p>		<p>Switch off. Remove the battery before maintenance.</p>
	<p>Read the instruction manual.</p>		<p>Keep bystanders at a safe distance (at least 5m).</p>
	<p>Caution: Wait until blades stop rotating when switched off.</p>		<p>Always keep the lawnmower on the ground when mowing. Tilting or lifting the lawnmower may cause stones to be thrown out.</p>
	<p>Do not mow in the rain or leave the lawnmower outdoors while raining.</p>		<p>Guaranteed Sound Power Level</p>

- Please read this manual carefully. Familiarise yourself thoroughly with the controls and proper use of this machine. You should know how the machine works and how to immediately switch it off.
- Never let children use this mower. Never let adults work with this mower if not properly trained.
- Do not let any persons, especially small children, or pets near you while mowing.
- Take care not to slip or fall while mowing.



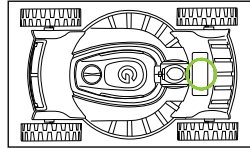
Thank you for choosing Gtech

"Welcome to the Gtech family. I started Gtech to create sensible, easy to use products that do a great job, and hope you get many years of trouble-free performance from your new product."

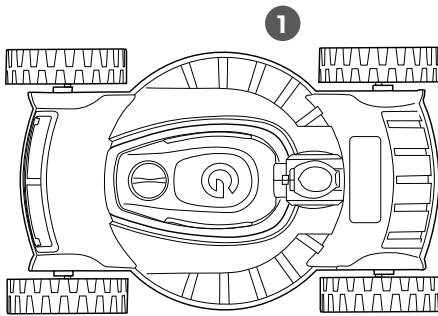
Nick Grey – Inventor, owner of Gtech

Make a note of your product serial number code for future reference. You can find this behind the handle on the body of the mower.

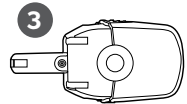
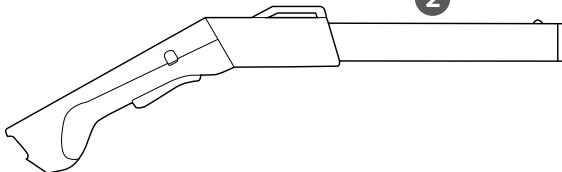
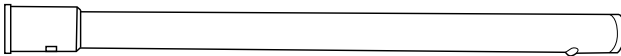
--- -- ~
--- -- ~
--- -- ~
--- -- ~



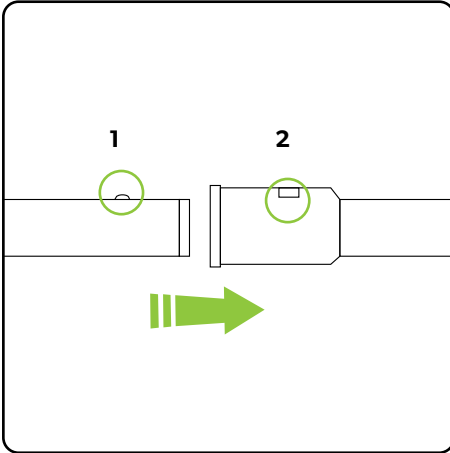
What's in the box



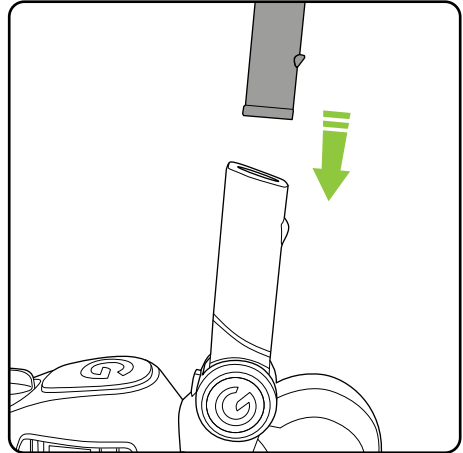
- 1 Mower unit
- 2 Handle (2 sections)
- 3 Battery
- 4 Charger



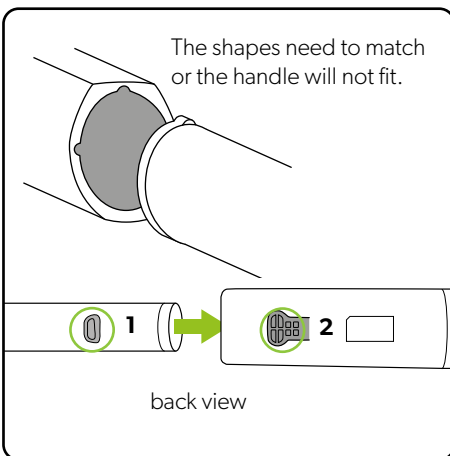
Assembly



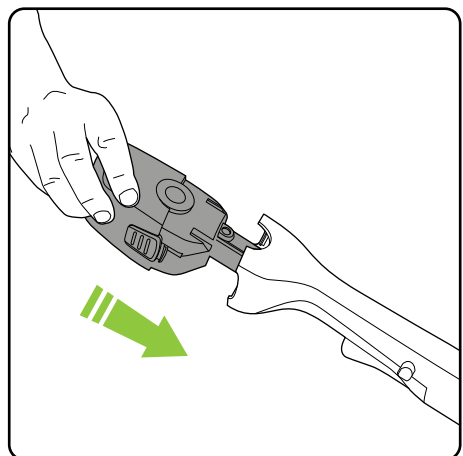
Assemble the two parts of the handle. When the pole is fully inserted, the button (1) will pop up into the aperture (2).



Insert the assembled handle into the mower main unit, ensuring it is the right way up.

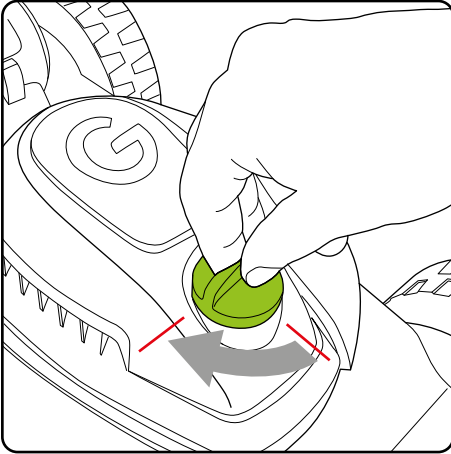


When the pole is fully inserted, the button (1) will pop up into the aperture (2).

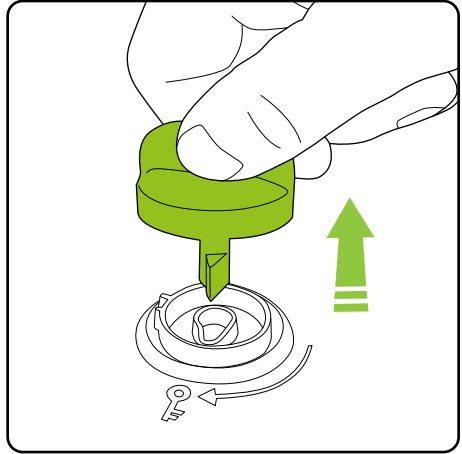


Insert the battery which will click into place.

The safety key



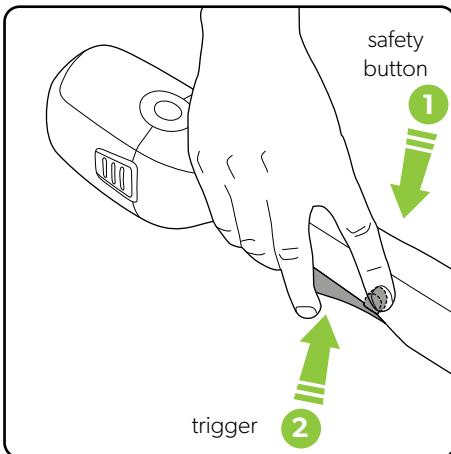
The mower will not work without the safety key. Rotate it 90° clockwise to operate.



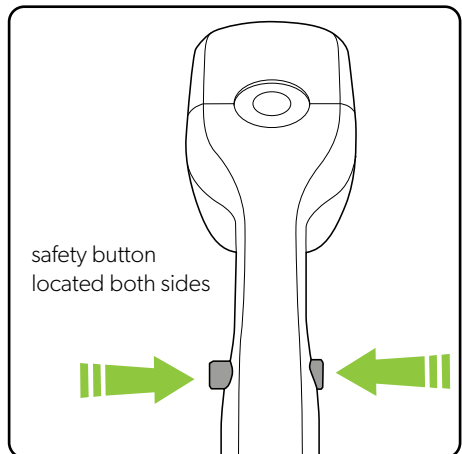
The safety key can be removed and stored out of reach of children.

WARNING: to reduce risk of injury remove the safety key when the mower is not in use, being transported, handled or stored, or carrying out any maintenance.

Operation



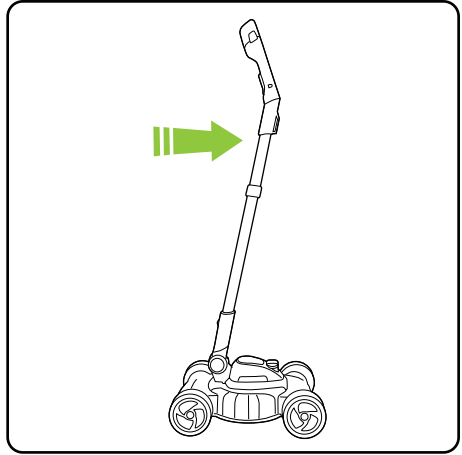
Push and hold the safety button on either side, then press the trigger to operate.



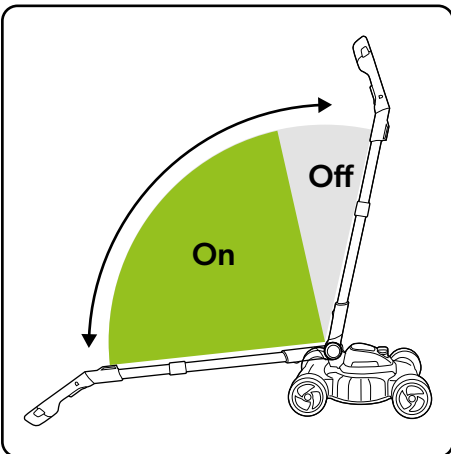
When you release the trigger the mower will stop.



Push the mower along as you walk behind it.

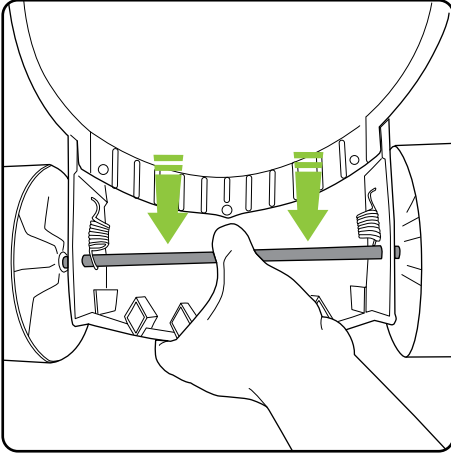


When the handle is pushed forwards the motor will cut out as a safety feature. This is also the "parking" position for the mower.

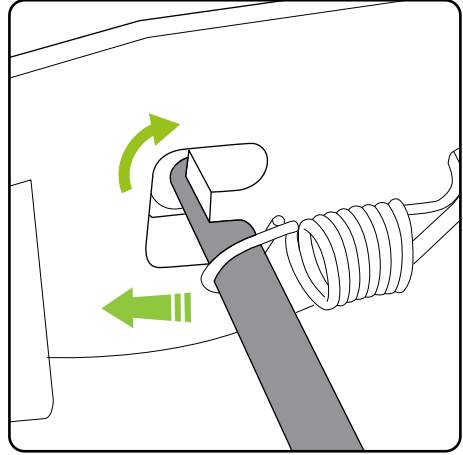


The mower has a safety cut-out feature when the handle is in parking mode.

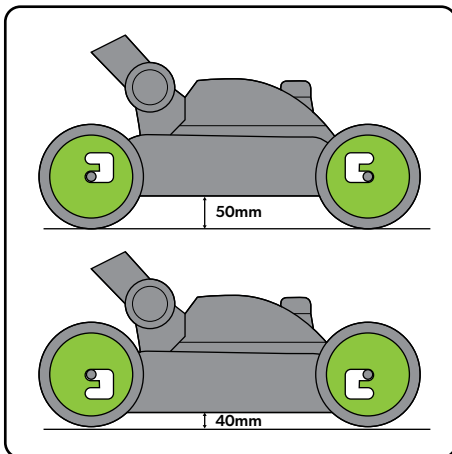
Adjusting the cutting height



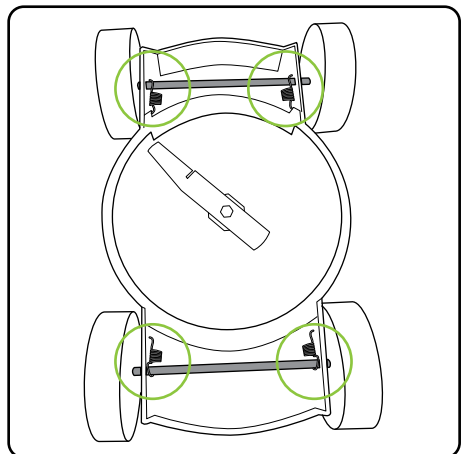
There are two cutting heights. To change from one to the other, engage the safety switch and remove the battery, then turn the mower over. Pull the axle away from the blade and guide it into the other position.



The spring will keep the axle in position.



The cutting heights are 40mm and 50mm.

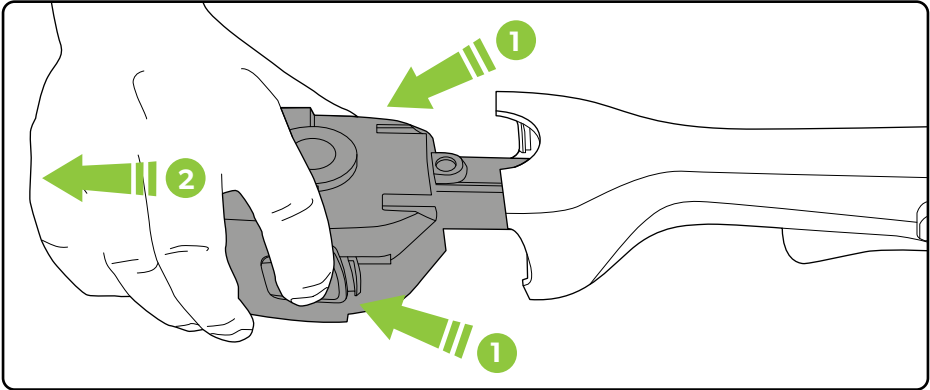


Ensure both wheels on both axes are on the same setting.



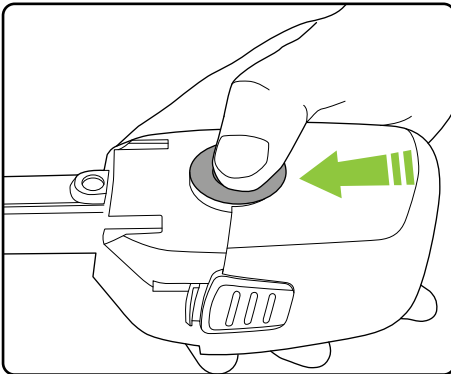
WARNING: to reduce risk of personal injury, wait for the blade to stop rotating and remove the safety key and battery before adjusting the cutting height.

Removing the battery for charging



Press both buttons at the same time and pull to remove the battery.

Checking the battery charge status

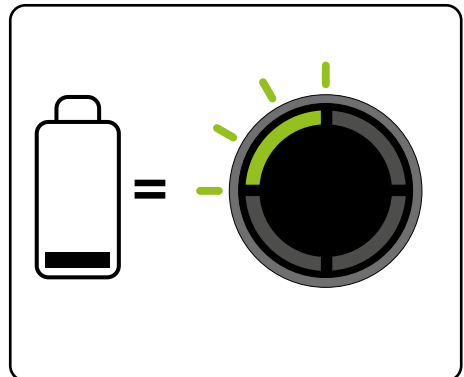


Press the button to check how much charge there is in the battery.



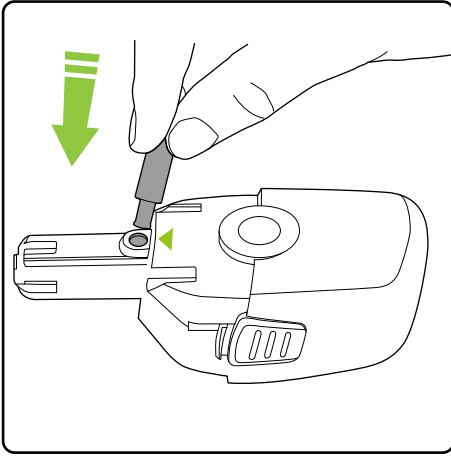
Figures are approximate.

The number of lit LEDs shows the charge.

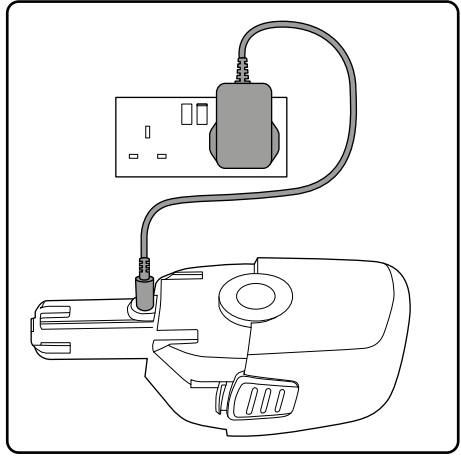


When there is no charge left, the final LED will flash for 10 seconds and then go out.

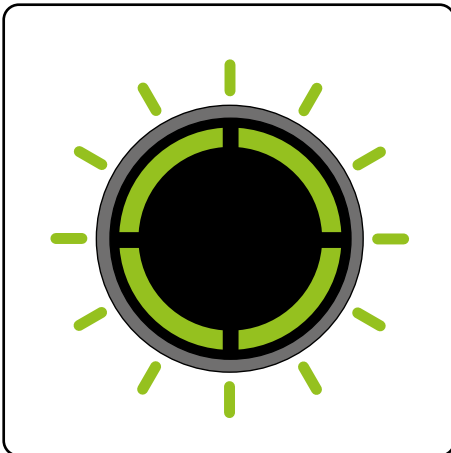
Charging the battery



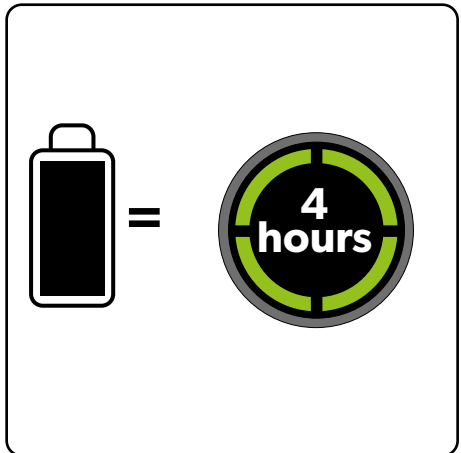
Connect the charger to the battery where indicated.



Plug the charger into an ordinary plug socket.

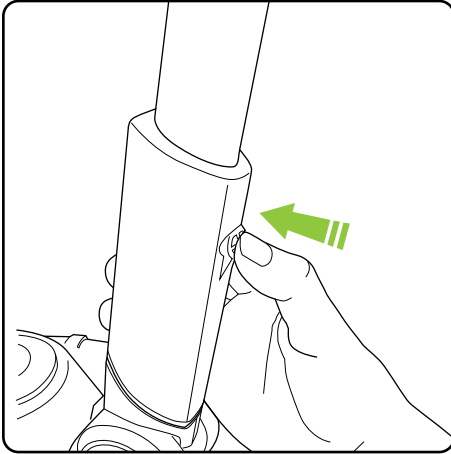


While charging the LEDs will progressively pulse until all four are lit.

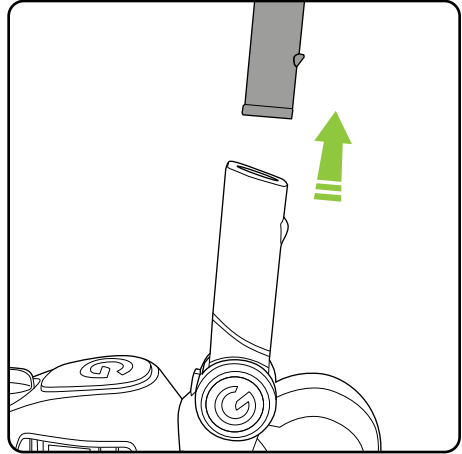


The battery can be charged from flat in 4 hours. The state of charge indicator will show 4 solid green lights when it is charged.

Disassembly



To remove the handle, first remove the battery then press the button at the back of the lower part of the handle.



Then pull the handle out.

Product Care



Wear protective gloves when handling, cleaning or replacing the blade.



To reduce the risk of injury ensure that safety key and battery is removed when the mower is not in use, being transported, handled or stored.

To ensure that your product gives you long and reliable service, carry out the following maintenance regularly:

- Check for obvious defects such as a loose, dislodged, worn or damaged blade, loose fixings and worn, damaged, or loose parts.
- Check that any covers and guards are correctly fitted and undamaged.
- Always clean the cutting blade after use and apply a lubricating oil or spray before storage.
- Before use, check the condition of the cutting edges of the blade and ensure the blade fixings are secure.
- Do not use water, solvents or polishes to clean the mower. Wipe clean with a dry cloth.
- Do not use abrasive materials to clean the product, and do not immerse it in water.
- Store it in a secure, dry place, out of reach of children. Do not expose to moisture.

PLEASE NOTE: if the product needs to be repaired or replaced, only use replacement parts supplied by the manufacturer.

Spare parts can be purchased from Grey Technology Ltd.

Tel: **01905 345 891**

Web: **www.gtech.co.uk/support**

Troubleshooting

Motor not running	<ol style="list-style-type: none">1. Charge battery2. Check safety key is inserted and switched on3. Check switch operation It will click if operating correctly.
Irregular running/machine vibrating strongly	<ol style="list-style-type: none">1. Blade may be defective2. Blade may be loose3. Check the blade is fitted and nut is tightened.4. Check if any obstacle is preventing normal rotation of the blade.
Struggling to cut/jamming	<ol style="list-style-type: none">1. Push the mower more slowly2. Raise the cutting height3. Check for a build-up of grass4. Blade may be blunt
Cutting blade will not cut	<ol style="list-style-type: none">1. Blade is either worn or damaged.2. Replace blade
Cutting time has reduced	<ol style="list-style-type: none">1. Use a lighter cutting action and cut in several stages.2. Fully discharge and recharge battery.3. Replace blade.
Mower stops when cutting	<ol style="list-style-type: none">1. Handle may be in "park" position.2. Charge battery.
Trimmer stops when cutting. LEDs show solid red	<ol style="list-style-type: none">1. The mower is overloaded.2. Check blade and remove any debris.3. Grass too thick – use lighter cutting action/ raise height setting.4. Push the mower more slowly.

Product support

If these initial tips do not solve your problem we please visit our support area where you can find troubleshooting help including online manuals, FAQs and how-to-videos, as well as genuine spares and replacement parts compatible with your product.

Visit: www.gtech.co.uk/support



Online



Live chat support



support@gtech.co.uk



How to Videos

TECHNICAL SPECIFICATION

Voltage	18V
Battery capacity	2.0 Ah Li-Ion
Blade speed	5200 rpm
Charge time	4 hour
Cutting Width	250mm
Protection type	IPX 4
Measured sound power level	84.5 dB (A); K= 1.98 dB (A)
Guaranteed sound power level	96 db(A)
Sound pressure level	72.8 dB (A); K= 3 dB (A)
Vibration	Front handle: 1.559 m/s ² Rear handle: 1.049 m/s ² K= 1.5 m/s ²
Weight	3.5kg
Charger Input	100-240V~, 50/60Hz, 0.35A
Charger Output	21.6V DC---500mA 10.8W

Environmental and Product Recycling

The  symbol indicates that this product is covered by legislation for waste electrical and electronic products (Directive 2012/19/EU)

When the product has reached the end of its life please do not dispose of it with general household waste. Consider the environment and take it to a recognised recycling facility.

The product contains a Li-Ion battery which should not be disposed of with general household waste. The battery should be disposed of properly with the product at a recycling facility.

Call your local council, civic amenity site, or recycling centre for information on the disposal and recycling of electrical products.

Alternatively visit www.recycle-more.co.uk for advice on recycling and to find your nearest recycling facilities.

FOR DOMESTIC USE ONLY

**UK
CA**

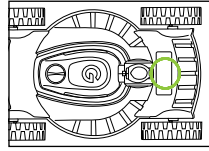
CE



WARRANTY – REGISTRATION

Visit www.gtech.co.uk/warrantyregistration to register your product to ensure that we have all the information required to provide you with quick and efficient support.

You will need your product's serial code.



If you purchased directly from Gtech your details are already registered and your 2 year warranty will start automatically.

If you purchased from an authorised Gtech retailer, please register your warranty within 3 months and you will need to provide proof of purchase to support any claim against your warranty.

WARRANTY – TERMS AND CONDITIONS

If your product is within its warranty and has a fault that cannot be resolved from the troubleshooting section or online support, please do the following:

- Contact our Gtech Customer Care Helpline on UK: 08000 308 794, who will go through any troubleshooting with you to identify the fault.
- If your fault can be resolved by a replacement part, this will be sent to you free of charge.
- Following troubleshooting, if your product needs to be replaced, we will arrange collection of your faulty product for inspection, and delivery of a replacement product free of charge.

Your product is guaranteed against material or manufacturing faults for 2 years from the date of purchase (or the delivery date if this is later) subject to the following terms and conditions:

SUMMARY

The guarantee becomes effective at the date of purchase (or the date of delivery if this is later). If a product is repaired or replaced during the warranty period, the warranty period is not started again.

- You must provide proof of delivery/purchase before any work can be carried out on the product. Without this proof, any work carried out will be chargeable. Please keep your receipt or delivery note.
- All work will be carried out by Gtech or its authorised agents.
- Any parts which are replaced will become the property of Gtech.
- The repair or replacement of your product is under guarantee and will not extend the period of guarantee.
- The guarantee provides benefits which are additional to and do not affect your statutory rights as a consumer.

WHAT ISN'T COVERED

Gtech does not guarantee the repair or replacement of a product as a result of:

- Normal wear and tear (e.g. blade, batteries) .
- Accidental damage, faults caused by negligent use or lack of care and maintenance, misuse, neglect, careless operation or handling of the product which is not in accordance with operating manual.
- Blockages. Please refer to the operating manual for details of how to unblock your product.
- Use of the product for anything other than the normal domestic household purposes.
- Use of parts and accessories which are not Gtech genuine components.
- Faulty installation (except where installed by Gtech)
- If it is modified in any way.
- Repairs or alterations carried out by parties other than Gtech or its authorised agents.
- Purchasing your product from an unofficial third party (i.e not from Gtech or an official Gtech retailer.
- If you are in doubt as to what is covered by your guarantee, please call the Gtech Customer Care Helpline on UK: 08000 308 794

International orders are subject to a delivery charge for both faulty and non faulty products.

EC Declaration of Conformity

We, the manufacturer/ importer,

Grey Technology Ltd
Brindley Road
Warndon
Worcester
WR4 9FB, UK

declare that the following machine complies with the appropriate health and safety requirements of the following directives based on its design and type.

In case of alteration of the machine, not agreed upon by us, this declaration will lose its validity

Product's name / function: Cordless Lawn mower / for cutting grass.
Machine Type: SLM50
Rated voltage: 18VDC
Measured sound power level: 84.5 dB(A) K= 1.98 dB (A)
Guaranteed sound power level: 96dB(A)

Notified Body: Conformity assessment method to Directive 2000/14/EC and 2005/88/EC
The EC type-examination certificate is issued by SGS
Notified body of Noise directive:
AV Technology
Unit 2 Easter Court Europa Boulevard Warrington, Cheshire,
WA5 7ZB, United Kingdom.
Notified Body number:1067

Applicable EC Directives: EMC Directive 2014/30/EU
Machinery Directive 2006/42/EC
Noise Directive 2000/14/EC and 2005/88/EC
RoHs Directive 2011/65/EU

Applicable Harmonized Standards: EN 60335-1
EN 60335-2-77
EN 55014-1
EN 55014-2
EN 62321

Authorized Signature/Date/ Place:  12/5/2021

Title of Signatory: Technical Manager

Name and address of the person authorised to compile the technical file, who must be established in the community:

Andrew Boddy
Grey Technology Ltd
Brindley Road
Warndon
Worcester
WR4 9FB

Gtech

Grey Technology Limited

Brindley Road, Warndon, Worcester, WR4 9FB, UK

email: support@gtech.co.uk

telephone: 01905 345891

www.gtech.co.uk/support